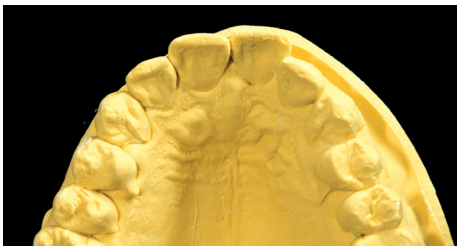




## Temporaries Made from Diagnostic Wax-Ups



**STEP 1:** Alignment problems are apparent from the occlusal view. Teeth #7 & #8 are rotated clockwise, and #9 is positioned too far facially for minimal-prep veneers.



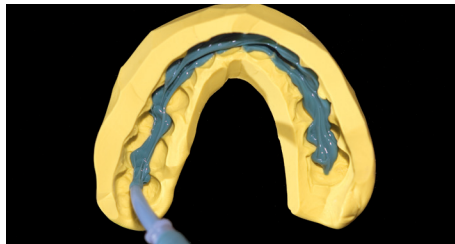
**STEP 2:** To help visualize alignment issues, place an orthodontic arch wire on the model. This helps in preplanning tooth preparation.



**STEP 3:** Note the difference in clinical crown length on teeth #8 & #9; #8 is 10.5 mm long, the common length of a very esthetic central incisor.



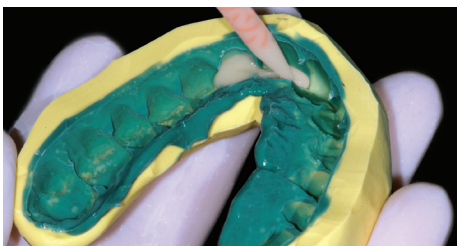
**STEP 4:** Once fully mixed, the putty is rolled and pressed down over the wax-up. Make sure the putty covers all teeth, not just those that are waxed-up.



**STEP 5:** Reline the putty matrix with a light- or ultralight-viscosity syringe material. Place this wash material along the entire length of the matrix.



**STEP 6:** Seat the putty matrix filled with syringe material back onto the model. It should ooze from the matrix. Wait at least seven minutes to remove.



**STEP 7:** Choose a bisacryl temporary material that is one shade lighter than the desired shade, and inject it into the putty-wash matrix.



**STEP 8:** When placing the matrix, you should see excess bisacryl material. Leave seated for three minutes to mechanically lock it into place.